



CROCHET | SKILL LEVEL: EASY

### MEASUREMENT

Approx 8" [20.5 cm] square.

### GAUGE

13 sc and 14 rows = 4" [10 cm].

### INSTRUCTIONS

#### Stripe Pat

With MC, work 3 rows.  
 \*With A, work 1 row.  
 With B, work 1 row.  
 With MC, work 1 row.\*  
 Rep from \* to \* 3 times more.  
 With MC, work 2 rows.  
 These 17 rows form Stripe Pat.

With MC, ch 6. (See diagrams).

**1st row:** (RS). 1 dc in 4th ch from hook. 1 dc in each of next 2 ch. Turn - 1 block made.

**2nd row:** Ch 6. 1 dc in 4th ch from hook. 1 dc in each of next 2 ch - beg block made. (Sl st. Ch 3. 3 dc) in next ch-3 sp - block made. Turn - 2 blocks.

**3rd row:** Beg block. (Block in next ch-3 sp) twice. Break MC. Turn - 3 blocks.

**4th row:** Join A with sl st in first d.c. Beg block. (Block in next ch-3 sp) 3 times. Break A. Turn - 4 blocks.

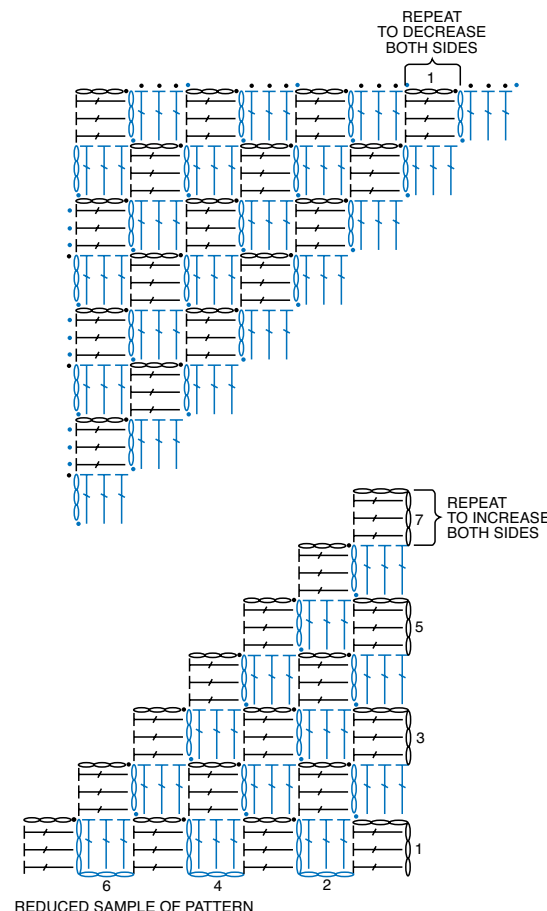
**5th row:** Join B with sl st in first dc. Beg block. (Block in next ch-3 sp) 4 times. Break B. Turn - 5 blocks.

**6th row:** Join MC with sl st in first dc. Beg block. (Block in next ch-3 sp) 5 times. Break MC. Turn - 6 blocks.

Cont in this manner, inc 1 block each row and keeping cont of Stripe Pat until there are 9 blocks (9 rows are complete).

Keeping cont of Stripe Pat, beg dec each side as follows:

**1st row:** (WS). Join A with sl st in first ch-3 sp. Block in same ch-3 sp as last sl st. \*Block in next ch-3 sp. Rep from \* to last ch-3 sp. Sl st in last ch-3 sp (do not make a block). Break A. Join B. Turn. Keeping cont of Stripe Pat, rep last row until 1 block remains. Fasten off.



**STITCH KEY**

- = chain (ch)
- = slip st (sl st)
- = double crochet (dc)

### MATERIALS

Lily® Sugar'n Cream® (2.5 oz/70.9 g; 120 yds/109 m)

**Main Color (MC)** Red (00095) **1 ball or 20 m/22 yds**

**Contrast A** White (00001) **1 ball or 14 m/16 yds**

**Contrast B** Yellow (00010) **1 ball or 23 m/26 yds**

Size U.S. H/8 (5 mm) crochet hook **or size needed to obtain gauge.**

### ABBREVIATIONS:

**Approx** = Approximately

**Beg** = Beginning

**Ch** = Chain(s)

**Cont** = Continue(ity)

**Dc** = Double crochet

**Dec** = Decrease(ing)

**Inc** = Increasing

**Pat** = Pattern

**Rep** = Repeat

**RS** = Right side

**Sc** = Single crochet

**Sl st** = Slip stitch

**Sp(s)** = Space(s)

**WS** = Wrong side